

The Over-the-Rhine Foundation

1

Mission

2

To preserve, protect and celebrate Over-the-Rhine, the historic heart of Cincinnati, by encouraging community growth, good government, planning and responsible development.

3

4

Presentation: Why OTR Matters



Introduction

Introduction

Over-the-Rhine is:

1

❖ A former working-class German immigrant neighborhood

2

❖ A mixed-use community

3

❖ A center – geographical, topographical, economic, cultural

4

❖ A poster child for urban blight, crime, and poverty

❖ A densely knit streetscape

❖ **An unparalleled architectural collection**



OVER THE
RHINE
FOUNDATION

Presentation: Why OTR Matters

History & Architecture

What sets OTR apart?

1

- ❖ Extremely high density
 - ❖ Rarely found outside NYC

2

- ❖ Strong architectural cohesiveness
 - ❖ Largest collection of Italianate buildings

3

- ❖ Individual iconic buildings

4

- ❖ Fingerprints of iconic people
- ❖ National and local historical significance

**A densely knit fabric of cohesive
architecture reminiscent of
European cities**

Presentation: Why OTR Matters



OVER THE
RHINE
FOUNDATION

Introduction

1

2

3

4

**One of the most unique, inspiring,
and talked about neighborhoods
in the country**

Presentation: Why OTR Matters



**OVER THE
RHINE
FOUNDATION**

An Expert's Perspective

1

2

3

4

“In all of America, there is *no more promising* an urban area for revitalization than your own Over-the-Rhine. When I look at that remarkably untouched, expansive section of architecturally uniform structures, unmarred by clashing modern structures, I see in my mind the possibility for a revived district that *literally could rival similar prosperous and heavily visited areas*”

**-Arthur Frommer,
Founder of Frommer's Travel Guides**

Presentation: Why OTR Matters



An Expert's Perspective

1

“it is the density coupled with the fact OTR was a port of entry for working class immigrants and transplants that makes it distinctive nationally...the concentration of 3-5 story tenements, many of them common walled, with first floor commercial, coupled with all the churches and cultural/institutional buildings...give OTR much of its identity. The fact that the first American Turnverein, the first German Methodist Church [Nast] and the nation's oldest large Music Hall are all in OTR and all have Germanic associations adds to national significance. I think a case can be made for NHL (National Historic Landmark status).”

2

3

4

Steve Gordon,
Former Survey & National Register Manager
Ohio Historic Preservation Office

Presentation: Why OTR Matters



OVER THE
RHINE
FOUNDATION

An Expert's Perspective

1

“(Over-the-Rhine) is prettier and more valuable than anything in Charleston or Savannah, and I love them both”

2

3

4

Carl Westmoreland

Founder, Mt. Auburn Good Housing Foundation



**OVER THE
RHINE
FOUNDATION**

Presentation: Why OTR Matters

OTR Institutions

1

2

3

4



Findlay Market:
Ohio's oldest
farmer's market



OVER THE
RHINE
FOUNDATION

Presentation: Why OTR Matters

OTR Institutions

1

2

3

4



Memorial Hall:
Samuel Hannaford &
Sons designed in 1908
to honor Civil War
veterans. Contains a
600 seat theater.

Presentation: Why OTR Matters



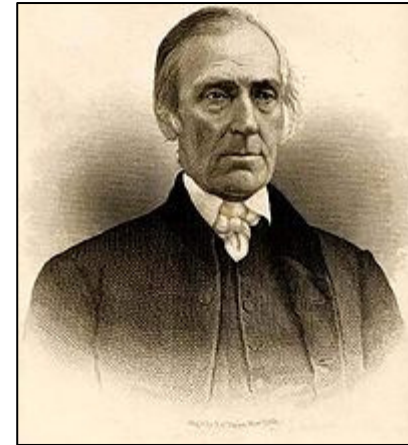
OTR Institutions

1

2

3

4



School for Creative and Performing Arts: Cornerstone was laid by President Taft. The school was built adjacent to the site of Levi Coffin's Underground Railroad stop



OVER THE
RHINE
FOUNDATION

Presentation: Why OTR Matters

OTR Institutions

1



2

3

4

Emery Theater: Designed to be one of the most acoustically perfect theaters in the nation, it was home to the Symphony for 17 years

Presentation: Why OTR Matters



OVER THE
RHINE
FOUNDATION

OTR Institutions

1

2

3

4



Music Hall: America's oldest, large-scale music hall, and home to one of America's oldest symphonies and opera companies. Site of presidential debates and numerous historic events.

Presentation: Why OTR Matters



OVER THE
RHINE
FOUNDATION

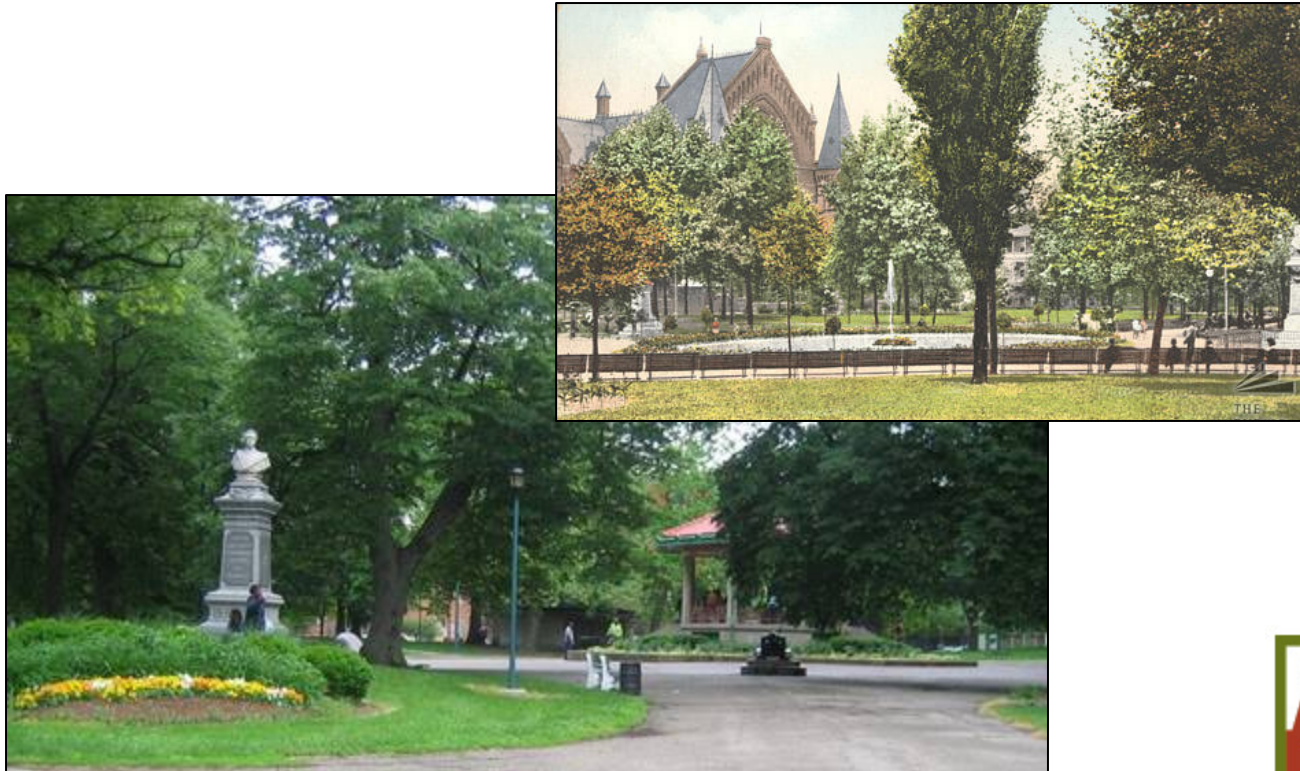
OTR Institutions

1

2

3

4



Washington Park: Cincinnati's oldest public park

Presentation: Why OTR Matters



OTR Institutions

1

2

3

4



Pendleton Arts Center



Cincinnati Art Academy

Presentation: Why OTR Matters



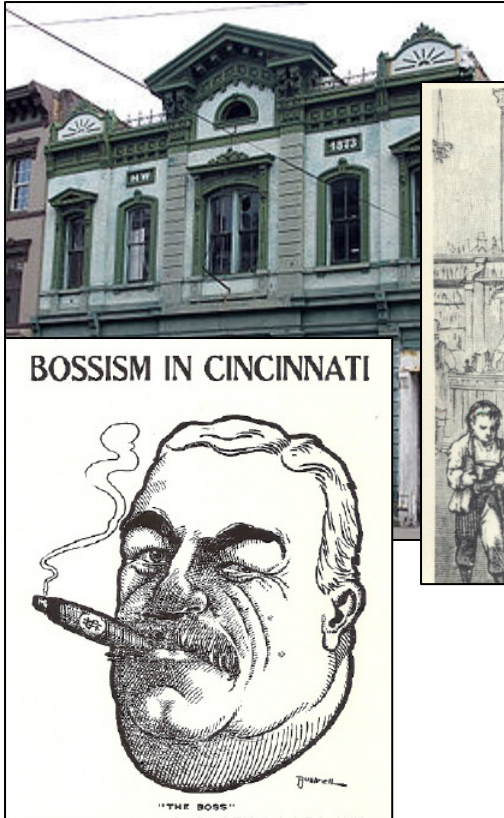
OTR Institutions

1

2

3

4



Wielert's Café, a restaurant/beer garden on Vine St. was a hub of social and political activity in Cincinnati

Presentation: Why OTR Matters



OTR Institutions

1

2

3

4



Old St. Mary's Cathedral – Built in 1842, it is Cincinnati's oldest church and still conducts German mass every week.

Presentation: Why OTR Matters



OVER THE
RHINE
FOUNDATION

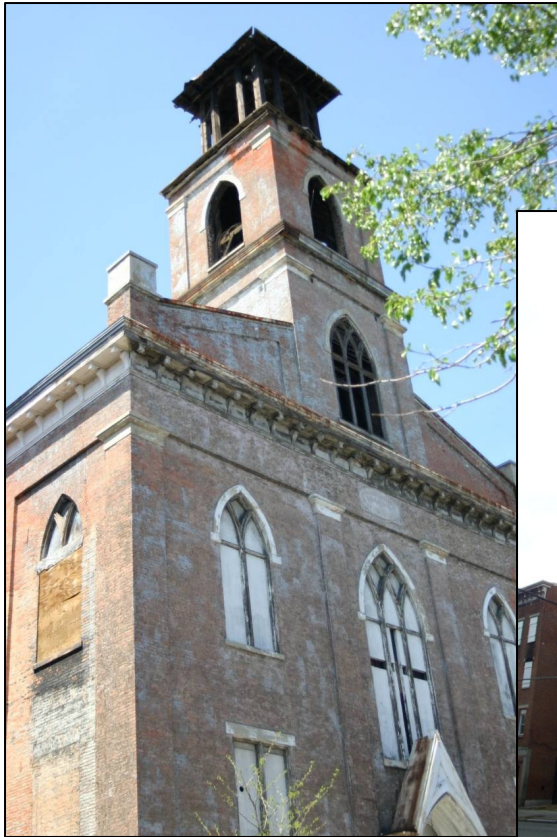
OTR Institutions

1

2

3

4



St. Paulus Kirche (Old St. Paul's) is Cincinnati's Third Oldest Church, constructed in 1850



Presentation: Why OTR Matters



OVER THE
RHINE
FOUNDATION

OTR Institutions

1

2

3

4



Phillippus Kirche:
Constructed in 1891, it is most famous for its “hand to God” steeple top and its pipe organ donated by the famed Moerlein brewing family.

Presentation: Why OTR Matters



OVER THE
RHINE
FOUNDATION

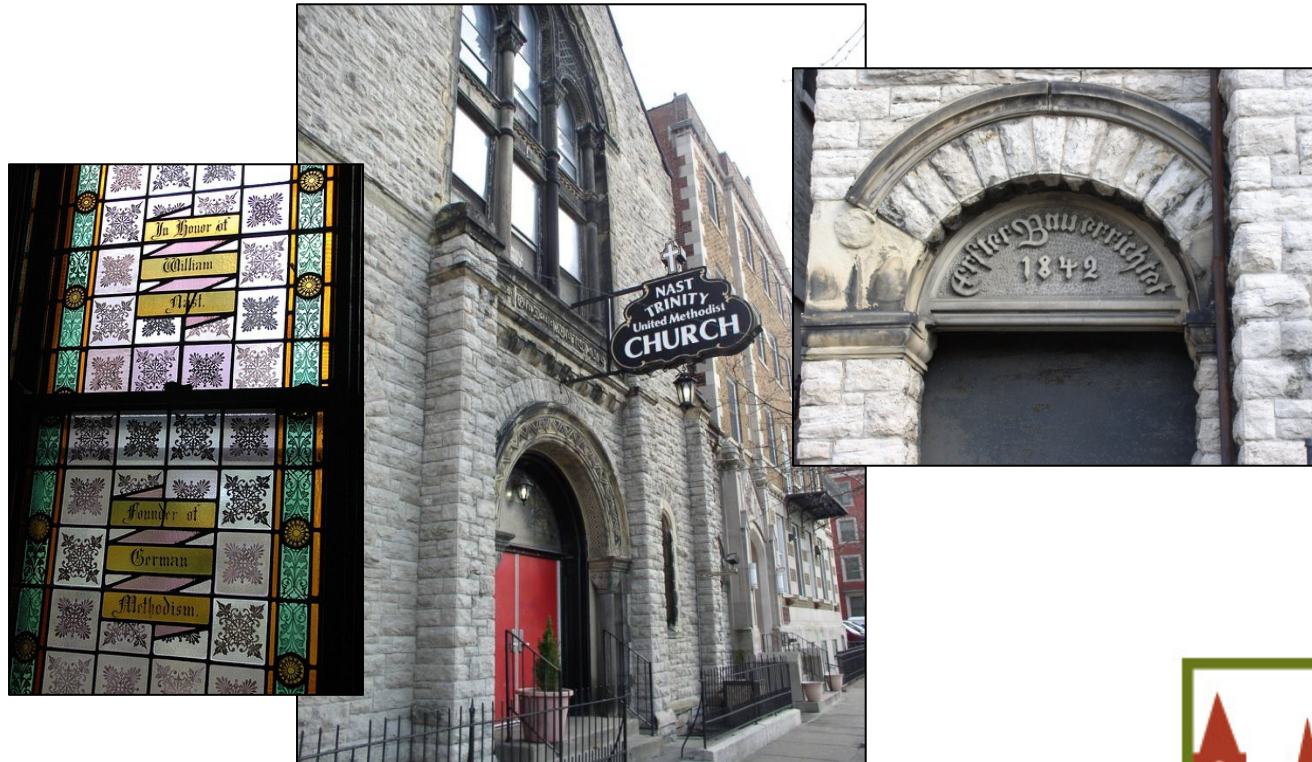
OTR Institutions

1

2

3

4



Nast Methodist Church, constructed in 1842/1880 to house the first German Methodist congregation in the United States. The church was designed by Hannaford.

Presentation: Why OTR Matters



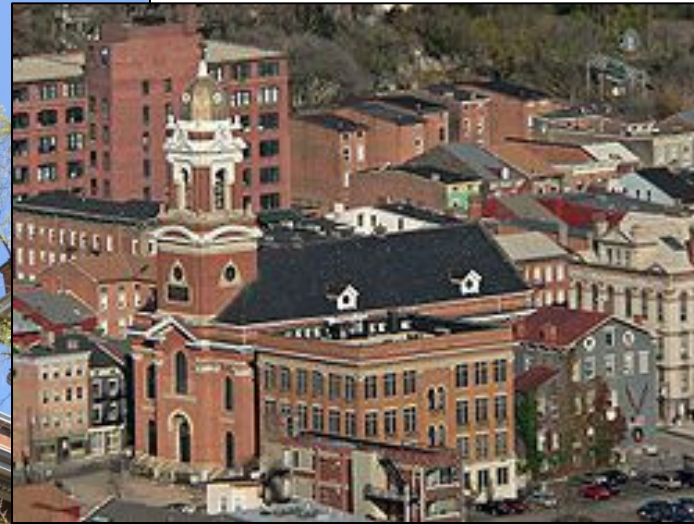
OTR Institutions

1

2

3

4



St. Paul's Cathedral:
Romanesque structure
with cupola, originally
dedicated in 1850



OVER THE
RHINE
FOUNDATION

Presentation: Why OTR Matters

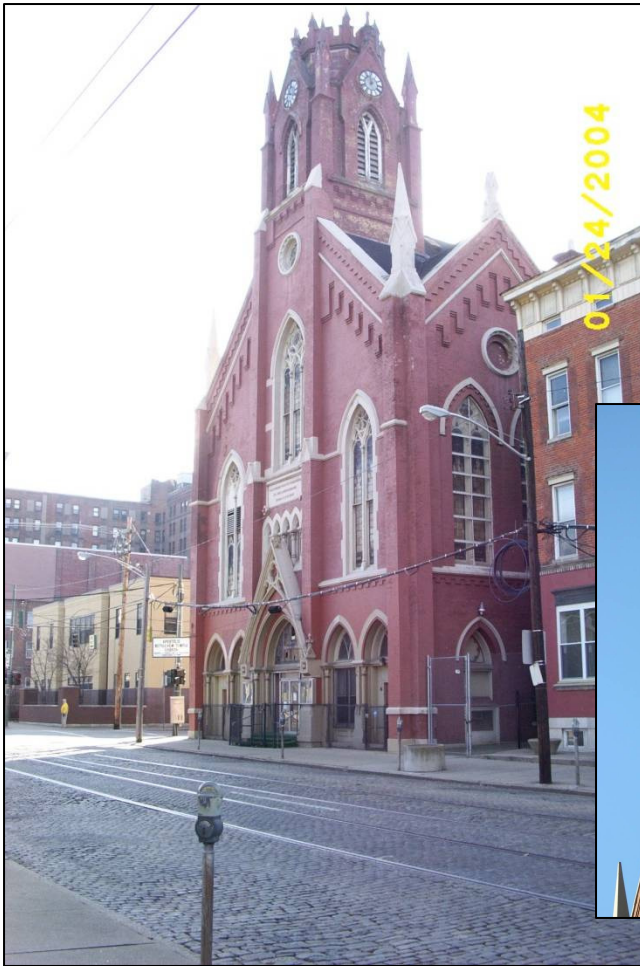
OTR Institutions

1

2

3

4



St. John's German Protestant Church was constructed in 1867, when it became the "new" home of Cincinnati's oldest German congregation, started in 1813.



Presentation: Why OTR Matters



OVER THE
RHINE
FOUNDATION

OTR Institutions

1

2

3

4



St. Francis Cathedral, built in 1859. Like many European cathedrals, St. Francis has bodies of the faithful interred in its basement.



OVER THE
RHINE
FOUNDATION

Presentation: Why OTR Matters

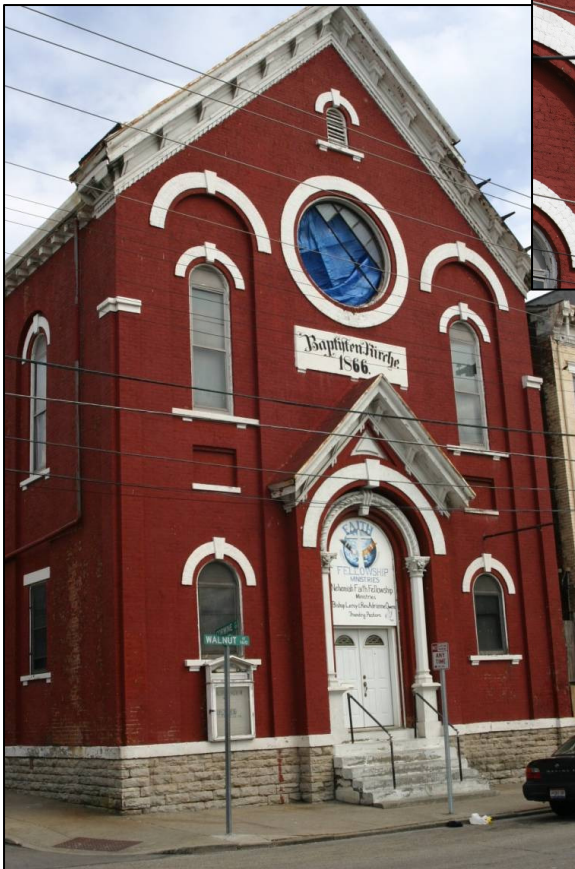
OTR Institutions

1

2

3

4



The Baptisten Kirche (German Baptist Church) was constructed in 1866 and was the center of the German-Baptist community in the West until the WWI.



OVER THE
RHINE
FOUNDATION

Presentation: Why OTR Matters

OTR Institutions

1

2

3

4



Christian Morlein Brewing Co.



- ❖ We believe that OTR contains the nation's largest collection of 19th Century brewery building stock.

Presentation: Why OTR Matters



OVER THE
RHINE
FOUNDATION